



November 7, 2016

Contact: Donna Scott-Martin

FOR IMMEDIATE RELEASE

301-699-3500, ext. 6152

Is There a Skeleton in Your Library?

Laurel, MD – The new Laurel Branch Library of the Prince George's County Memorial Library System is expected to have a grand opening later this month. An amazing dinosaur fossil replica of a *Nanotyrannus* will greet you as you step into the children's section of the library. This dinosaur skeleton is inlaid in a glass casing in the flooring by Stacy Trenary, owner of Darwin and Wallace: A Nature & Fossil Store (www.DarwinAndWallace.com). An interview with Stacy Trenary follows.

Q. How did you get interested in dinosaurs?

A. Like so many other kids it was a fascination for me. I always loved nature. Ever since childhood, dinosaurs have been my favorite animals, and they still are.

Q. Which one is your favorite and why?

A. *Carnotaurus*. It is a meat eating dinosaur with two big horns over its eyes. I like the *Carnotaurus* because it is so unique. Their fossils are found in Argentina.

Q. How old are the *Nanotyrannus* fossils, and where are they found?

A. The *Nanotyrannus* fossils are 66 million years old. These fossils are found in the western part of the United States, primarily Wyoming and Montana.

Q. Why did you choose the *Nanotyrannus* dinosaur for the new Laurel Branch Library?

A. Besides the practical considerations of being the best fit, this dinosaur is a predator. As a meat eater, it shows its teeth, and I think that makes it more exciting for kids.

Q. What is the most interesting fact about the *Nanotyrannus*?

A. The controversy over whether or not the *Nanotyrannus* is indeed its own species, or just a juvenile stage of *T. rex*. The debate has heated up within the last five years. I think they are separate based on certain anatomical differences.

Q. Explain the process from start to finish. How did you get the fossil initially and what did it take to have it displayed at the Library?

A. The fossil was excavated by paleontologists that were digging in the Lance Creek Formation of Wyoming. Though Lance Creek is a known fossil-bearing locality, actually finding the fossils is mostly luck! Once you arrive at a site, you hope some fossils are

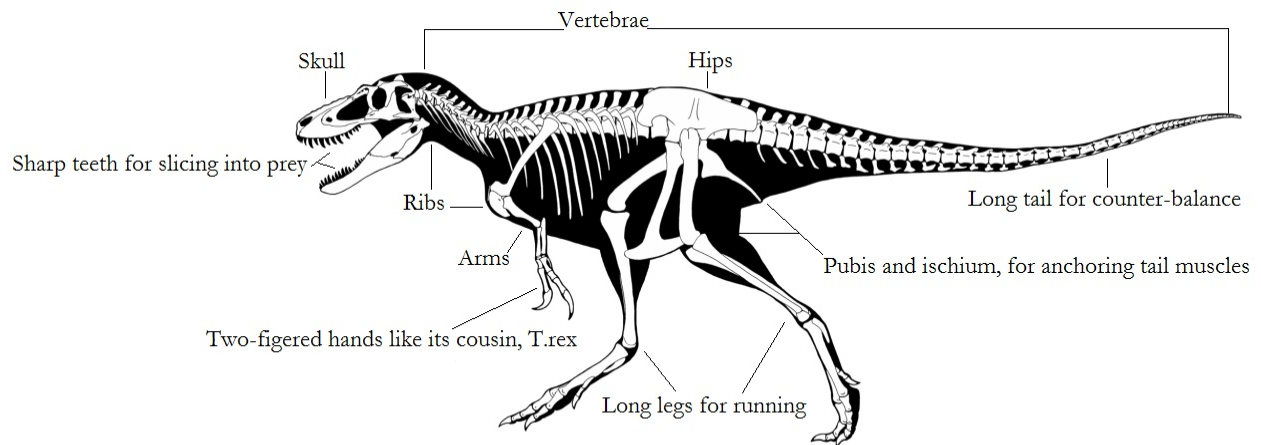
exposed so that you have an idea where to begin excavation. Then, you dig with shovels, picks, brushes, any tools on hand until you have a slab to take back to the lab, usually located at a museum. You wrap the slab in burlap, cover that with a plaster coating (called a “jacket”) and take it to the lab where it is opened for further excavation. The fossil is then molded and cast to be displayed at the museum, or other facility.

Q. What type of casting is the *Nanotyrannus* at the Laurel Library?

A. It is a 100 percent high impact resin cast from an original skeleton.

Below is a labeled *Nanotyrannus* drawing from Stacy Trenary to enhance your viewing of the dinosaur skeleton when the Laurel Branch opens. In the meantime, enjoy reading dinosaur stories. Here are some suggestions for your reading pleasure: *Rex* by Simon James, *Lizard from the Park* by Mark Pett, *Edwina the Dinosaur Who Didn't Know She Was Extinct* by Mo Willems, *Dinosaur Kisses* by David Ezra Stein and *Dinosaurs* (a giant fold-out book) by Simms Taback.

Nanotyrannus



Nanotyrannus lancensis : "Small Tyrant of the Lance Formation"

About The Prince George's County Memorial Library System

The Prince George's County Memorial Library System (PGCMLS), consisting of 19 branches, offers strategies for lifelong learning. Skills development library resources include: Rosetta Stone Library Solution, Lynda.com, Brainfuse's HelpNow and JobNow, ArtistWorks for Libraries and Learning Express Library. Early literacy resources are: Ready 2 Read Centers, Ready 2 Read Backpacks, ABCmouse, AWE Early Literacy Stations, Beanstack and Playaway Launchpads. All these services are free with your PGCMLS library card. Also, enjoy Minecraft, 3D printing, DREAM (Digital Resources for Electronic Applications in Media) lab, Chess Clubs and MAC (Manga and Anime Clubs) free at your library. Try out our new PGCMLS app too! Learn more about what your Library has to offer at www.pgcmls.info.

###

Related Dinosaur Images:



Carnotaurus, pictured above, is Stacy Trenary's favorite dinosaur



Laurel Branch Library Nanotyrannus skeleton being placed in the flooring.



Nanotyrannus Photo: Luis Rey